



Innovative Logistics Solutions



Global Consolidators

Frontline Supplychain
Solutions provider
for global trade



OUR STORY

A Global Network Shaped by Purpose.

VISION

To maintain our position as a leading global logistics solutions provider by utilizing advanced systems and the expertise of our skilled logistics professionals.

MISSION

To be customers' first choice for logistics solutions.

Global Consolidators, an **ISO 9001–certified logistics company** under the 1 GLOBAL enterprise group, is more than a service provider—we are a strategic logistics partner. Headquartered in Singapore, we deliver a full spectrum of international logistics solutions, including multimodal transportation across land, sea, and air, LCL and FCL consolidation, trilateral shipments, customs clearance, warehousing, last-mile delivery, transshipments, and value-added packing services.

Founded in Singapore with a mission to reshape how cargo moves across borders, Global Consolidators has grown from a single LCL operation into a global logistics network spanning 16 countries. Today, our regional hubs including Global Consolidators Sri Lanka, one of our most active LCL gateways strengthen our presence across Asia, the Middle East, and beyond.

From the beginning, we recognized that logistics needed more than carriers and schedules, it needed clarity, reliability, transparency, and a personal touch. Guided by these principles, we have built a business that integrates strategic infrastructure, a wide global network, and smart, in-house technology to help businesses from startups to global brands move freight with confidence.



CHAIRMAN'S WORDS

"We are grateful for the strong relationships we have built through the years with our customers and service providers"



Jay Prakash
Group Managing Director

Global Consolidators (GC) is completing nearly 15 years of operations and is part of the Singapore based 1 Global Group, having own operations in 16 countries with over 700 dedicated employees. The group has many business verticals which include Supply Chain Solutions, Renewable Energy, Information Technology & Business Process Outsourcing. Each of our business unit is run and managed by experts in their own field having very good experience to ensure successful implementation of our business plans.

Reflecting on GC's activities, we provide end to end total logistics to our clients which include Freight Management, Warehouse Management, Transport Management, Liquid Logistics & Oversize shipments/Projects. With in-house IT company, we are investing heavily in cutting-edge technologies, including AI, Automation, and data analytics, to optimize our operations and provide our clients with unparalleled efficiency and visibility.

Our clients are at the heart of everything we do, and we are dedicated to exceeding their expectations by providing reliable, cost effective, and tailored logistics solutions. We also value our employees as our greatest asset and are committed to fostering a positive and inclusive work environment where everyone can thrive and reach their full potential.

Consolmate, our newly developed customer portal provide enhanced total 'end to end' visibility on-line which include live quotations, bookings, billing/soa & live milestones picked up from various service providers and partners.

We are grateful for the strong relationships we have built through the years with our customers and service providers

Looking ahead, we are well-positioned to lead the way, by embracing innovation, prioritizing sustainability, and remaining laser-focused on our customers, we will continue to drive growth and create value for all our stakeholders.

Part of a Bigger Vision



As part of **1GLOBAL Enterprises**, Global Consolidators benefits from the reach, innovation, and ecosystem of a global connectivity powerhouse. 1GLOBAL operates in over 190 countries, delivering digital solutions across telecom, IoT, and logistics infrastructure.

This synergy empowers us to deliver smarter logistics backed by seamless tech and compliance support, giving our clients an edge in today's connected trade environment.

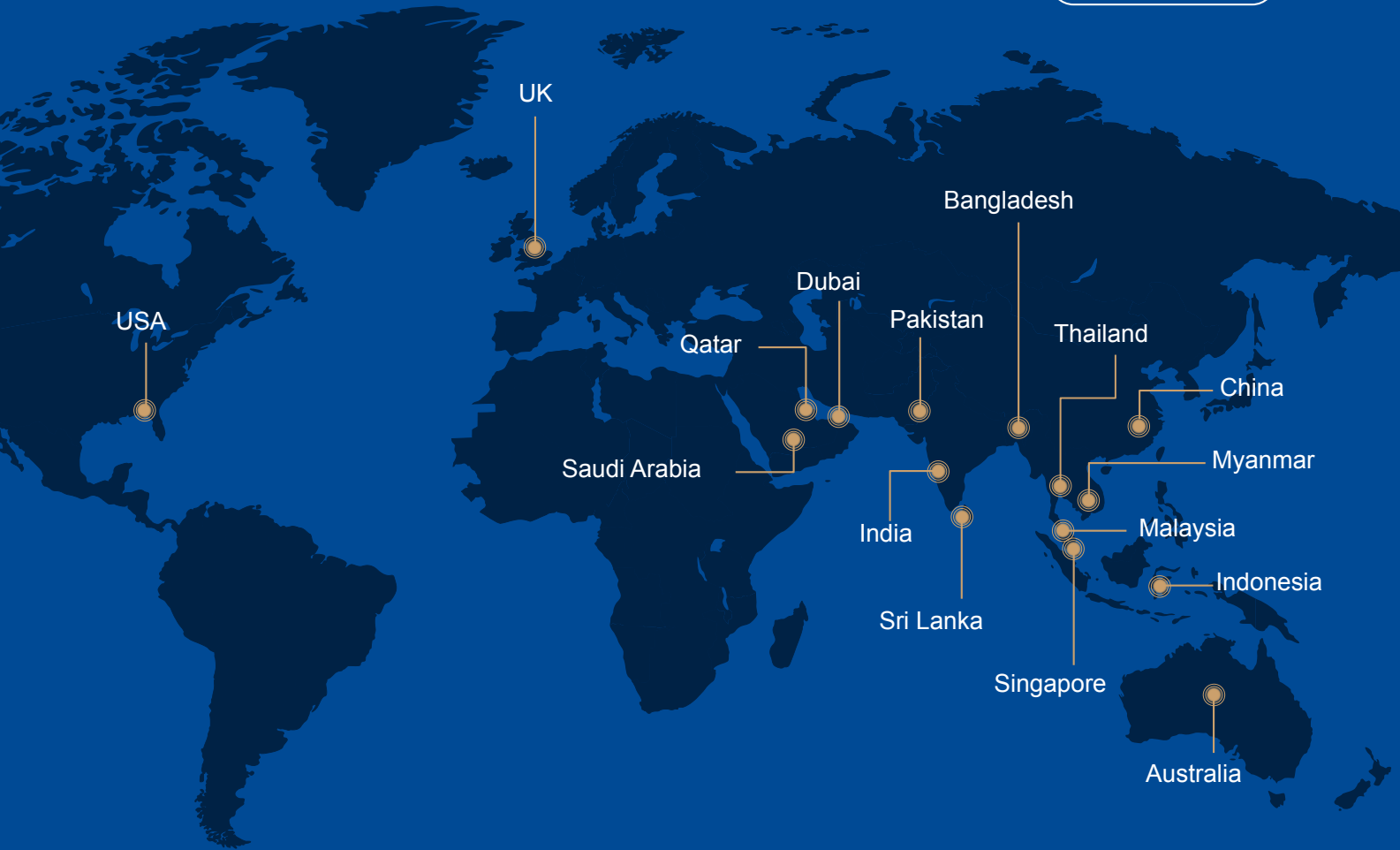


Trusted. Proven. Scalable.

Founded in
1998

Global Workforce
700+

Present in
16
Countries



Annually We Move,

144K+
Shipments

360K+
CBM

288K+
TEUs

2.7Mn+
KGs

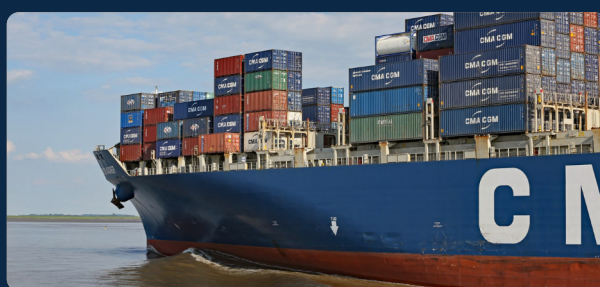
What We Do

Sea Freight

GC delivers sea freight solutions with expertise across major trade lanes. By partnering with multiple carriers, we ensure competitive rates, reliable space, and flexible sailing options. GC oversees the entire process from booking and container handling to vessel monitoring and final delivery while keeping customers fully informed.

FCL Services (Full Container Load)

GC offers Full Container Load (FCL) services, providing dedicated container space for single-shipment cargo. GC manages the entire process to ensure efficient, reliable, and cost-effective delivery.



LCL Consolidation (Less-than-Container Load)

Global Consolidators provides consolidation services across all key trade routes, offering competitive rates and flexible sailing options. We ensure timely deliveries with full pricing transparency from origin to destination, covering all major ports both inbound and outbound through direct services or via strategic transshipment hubs.

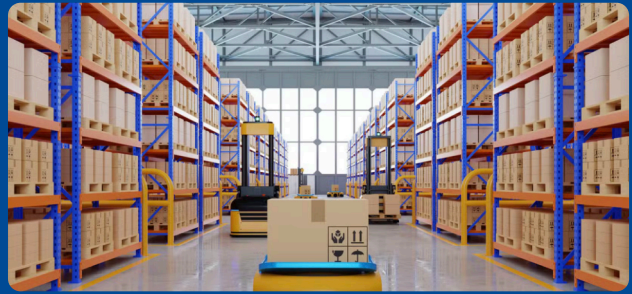


Air Freight

GC provides fast, reliable air freight solutions through a global network of specialized carriers. With flexible schedules, consolidation services, and multimodal options, the company ensures efficient cargo movement worldwide.

Warehousing

GC offers comprehensive warehousing solutions, including cold storage, with expertise in handling, storage, and distribution. By optimizing operations, the company enhances supply chain efficiency, profitability, and customer satisfaction.



Transshipments

GC offers seamless transshipment solutions for both LCL (Less than Container Load) and FCL (Full Container Load) cargo. We also specialize in Sea-to-Air and Air-to-Sea movements, ensuring flexible and efficient routing options to meet diverse logistics needs.

Customs House Brokerage

GC's Customs House Brokerage Division ensures fast, compliant clearance for both imports and exports. Handling sea and air shipments under all major trade terms, the team streamlines documentation and coordination with authorities. With tailored solutions and regulatory expertise, GC makes cross-border trade simpler, faster, and more cost-effective.



Project Cargo

GC's specialized project cargo division handles oversized, heavy, and complex shipments with customized solutions, ensuring safety, efficiency, and transparent project management from start to finish.

3PL

GC's cutting-edge 3PL warehouse management system enables businesses to optimize operations, implement advanced fulfillment strategies, enhance customer satisfaction, and reduce costs and delivery times.





Liquid Cargo Transportation

GC provides professional and secure liquid cargo transportation via ISO Tanks, Flexi Tanks, and IBCs, ensuring efficient door-to-door logistics with full visibility and cost-effective solutions.

Industries We Serve

- Electrical & Electronic
- Textile & Garments
- Manufacturing
- Automotive
- Mining & metals
- Renewable Energy
- Construction & Infrastructure
- Oil, Gas & Petrochemicals
- Agriculture & Food Processing
- Chemicals & Pharmaceuticals
- Retail & E-Commerce
- Paper, Pulp & Packaging



Why Choose Us



Strong Global Presence

Operating in 16 countries and supported by 200+ trusted agents worldwide, our integrated global network ensures seamless movement of goods through major trade corridors.

Comprehensive Freight Forwarding Services

Specializing in Sea, Air, and Land freight, we offer end-to-end solutions tailored to meet diverse shipping needs, ensuring timely and secure deliveries

Dedicated Workforce

Our team of over 700 professionals brings expertise and dedication, ensuring exceptional service and customer satisfaction at every step of the logistics process

Advanced Technology Integration

Leveraging our proprietary ShipSoft system, we provide customized logistics solutions that enhance operational efficiency and offer real-time tracking capabilities

Commitment to Sustainability

GC is committed to greener operations by using battery-operated equipment in warehouses, system-driven processes to minimize paperwork, and renewable electricity from rooftop solar power reducing carbon emissions across our supply chain.



Warehouse Facilities

Malaysia

Free Trade Zone | 140,000 sqft bonded warehouse | 9,000 pallet positions
40,000 sqft bulk stacking | 80,000 sqft open yard

Dubai

7,500 sqm floor area | JAFZA-approved infrastructure |
Multi-user distribution center | 8 loading bays with dock levelers

Singapore

Multi-user facility with connected office | 80,000 sqft warehouse
6,600 pallet positions

India

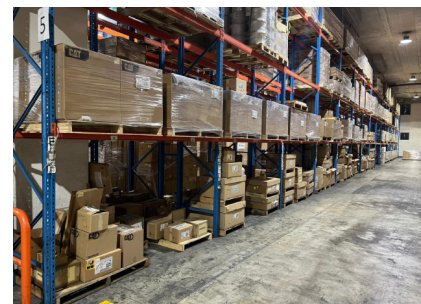
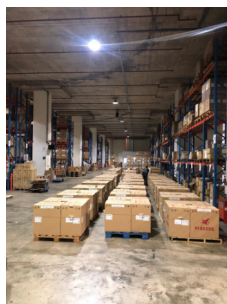
Noida
45,000 sqft

Chennai
7,500 sqft

Bangalore
20,000 sqft

Visakhapatnam
10,000 sqft

Goa
70,000 sqft



Certifications & Recognition

Proud recipient of the Sri Lanka Brand Leadership Award 2024 and certified to the ISO 9001:2015 standard by TÜV NORD CERT GmbH (Germany)

ISO 9001:2015 standard



Brand Leadership Award 2024

Our Valued Clients

Global Clients



Local Clients





Global Presence

SINGAPORE

Block 511 Kampong Bahru Road,
#03-01 Keppel Distripark,
Singapore - 099447.

UNITED KINGDOM

167-169 Great Portland Street,
5th Floor, London, W1W 5PF
United Kingdom.

AUSTRALIA

Suite 5, 7-9 Mallet Road,
Tullamarine, Victoria, 3043

INDONESIA

408, Lina Building
JL. HR Rasuna Said Kav B7,
Jakarta.

CHINA

6th Floor, 6B, Lushan Building,
No. 15, Jlang Bei Road,
Luoho, Shenzhen, China.

USA

No. 147 West 25th Street
6th Floor, New York,
NY 10001.

QATAR

P.O. Box No: 80546,
Office No: 48, 2nd Floor,
Al Matar Center
Old Airport Road, Doha, Qatar.

UAE

WH #ZG06,
Near Round About 13,
North Zone, P.O. Box 30821,
Jebel Ali, Dubai, UAE.

PAKISTAN

30-C, Stadium Lane #,
4 Khayaban-e-Shamsheer
Near Abdul Aziz Mosque
D.H.A Phase-V, Karachi, PK.

THAILAND

109 CCT Building, 3rd Floor Rm3,
Surawong Road, Suriyawongse,
Bangrak Bangkok 10500,
Thailand.

MYANMAR

No. 608, Room 8B,
Bo Soon Pat Tower, Merchant
Street, Pabedan Township
Yangon, Myanmar.

SAUDI ARABIA

R/N: 408,
Saudi Business Centre
7859 Al-Madinah
Al-Munawarah Road
Al Sharafeyah, Jeddah 4542-22234

BANGLADESH

Nirman S.S Tower (4th Floor),
North-East Side, 1817 Sheikh Mujib Rd,
Majar Gate, Abdussattar Kearanibari,
Double Mooring, Agrabad,
Chattogram, Bangladesh.

INDIA

Zafarullah Tower, 2A, 2nd Floor,
Old #126, New #257,
Angappa Naicken Street,
Parry's Corner, Chennai 600001.

MALAYSIA

MTBBT 2, 3A-5,
Jalan Batu Nilam 16,
Bandar Bukit Tinggi 2,
41200 Klang, Selangor Darul
Ehsan, Malaysia.

SRI LANKA

Ceylinco House, 9th Floor,
No. 69, Janadhipathi Mawatha,
Colombo 01, Sri Lanka

Start Your Journey with Us!

+941 14477494 / 98

info.cmb@globalconsol.com

www.globalconsol.com